

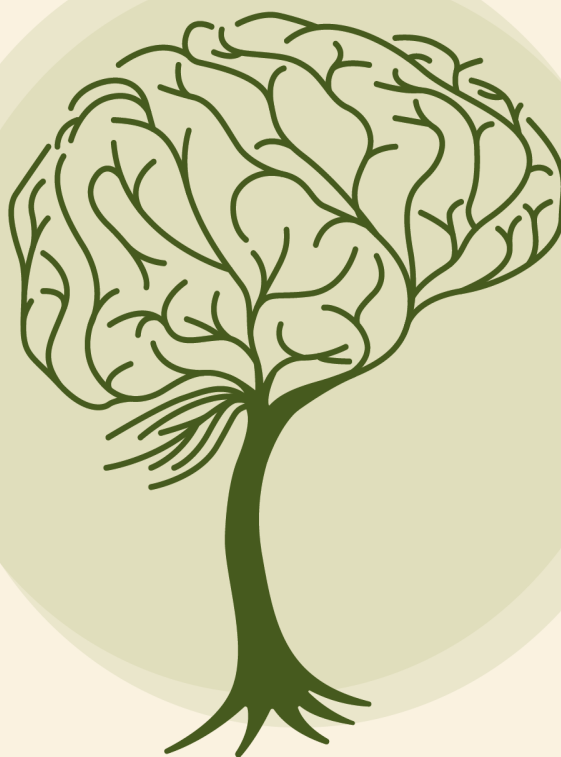
Mental Health Shared Care

Coordinated care services that enhance the physical and mental health of people suffering complex and severe mental illness

Therapeutic care and support, including therapy - for people who have been diagnosed with a serious mental illness. The program involves you, any other individual or support service (e.g. family or significant other) your GP and Mental Health Clinician working together to improve your overall physical and mental health. Mental Health Shared Care services are available to community members in the Riverland and Limestone Coast.

Want to know more?

Contact FocusOne Health or speak to your GP and request a referral (GP Mental Health Treatment Plan).



Funded by

phn
COUNTRY SA

An Australian Government Initiative



FocusOne
Health

3 Riverview Drive, Berri SA 5343

t 08 8582 3823

f 08 8582 3190

www.focusonehealth.com.au

e info@focusonehealth.com.au

13a Sturt Street, Mount Gambier SA 5290

t 08 8724 7696

f 08 8582 3190